

## PHASE 1 - FEASIBILITY ANALYSIS

### South Cambridge Street

(Vane St. to Park Ave.)

South Cambridge street is in very poor condition bordering on a failed roadway system. Extensive deterioration of the roadway surface is seen on the entire road. Sections of the road are raveling, showing loss of aggregate and the road is literally falling apart. Extensive cracking of all types are present as well as differential settlements in various areas. In addition, the street lacks consistent curbing and sidewalks. Some asphalt berm exists near Vane Street and some granite curb exists on the west side of the road between Warren and Park. Such curbing as it exists is no adequate to control storm water runoff on such a steep street. During Park Ave. reconstruction, handicap ramps were installed at the Park Ave. intersection and granite curb wraps around the corner of S. Cambridge St.

Considering the extremely steep slope of the roadway, storm water management is nearly impossible without adequate curbing. Uncontrolled storm water runoff has accelerated the deterioration of the asphalt in the 'gutters' of the roadway. Sidewalks are inconsistent. If work is considered on South Cambridge Street, close attention must be paid to drainage.

South Cambridge Street requires extensive reconstruction of the roadway, sidewalks, curbing and drainage system. Adequate curbing must be installed in order to properly control the flow of and capture storm water runoff. Without adequate drainage controls the accelerated deterioration of the existing and any proposed roadway surface will continue. Double grate inlet catch basins should be considered at the intersection of Warren Street while also re-grading the intersection to better direct water to the drain system as well as installing granite curing on the entire street.

In summary, the complete reconstruction of South Cambridge Street is recommended, including the installation of granite curb, concrete sidewalk, upgraded storm drain inlets. Milling and paving of the roadway itself might be adequate as most of the damage to the roadway may potentially be due to lack of storm water controls and excessive salt treatment of the roadway during the winter months. Current condition of the roadway makes plowing impossible.

## South Cambridge Street

Looking south towards Vane Street.  
Road and 'sidewalks' both in very  
poor condition. Sidewalks are not  
continuous southerly to Warren St.

Asphalt raveling, showing aggregate loss and  
creaking apart.

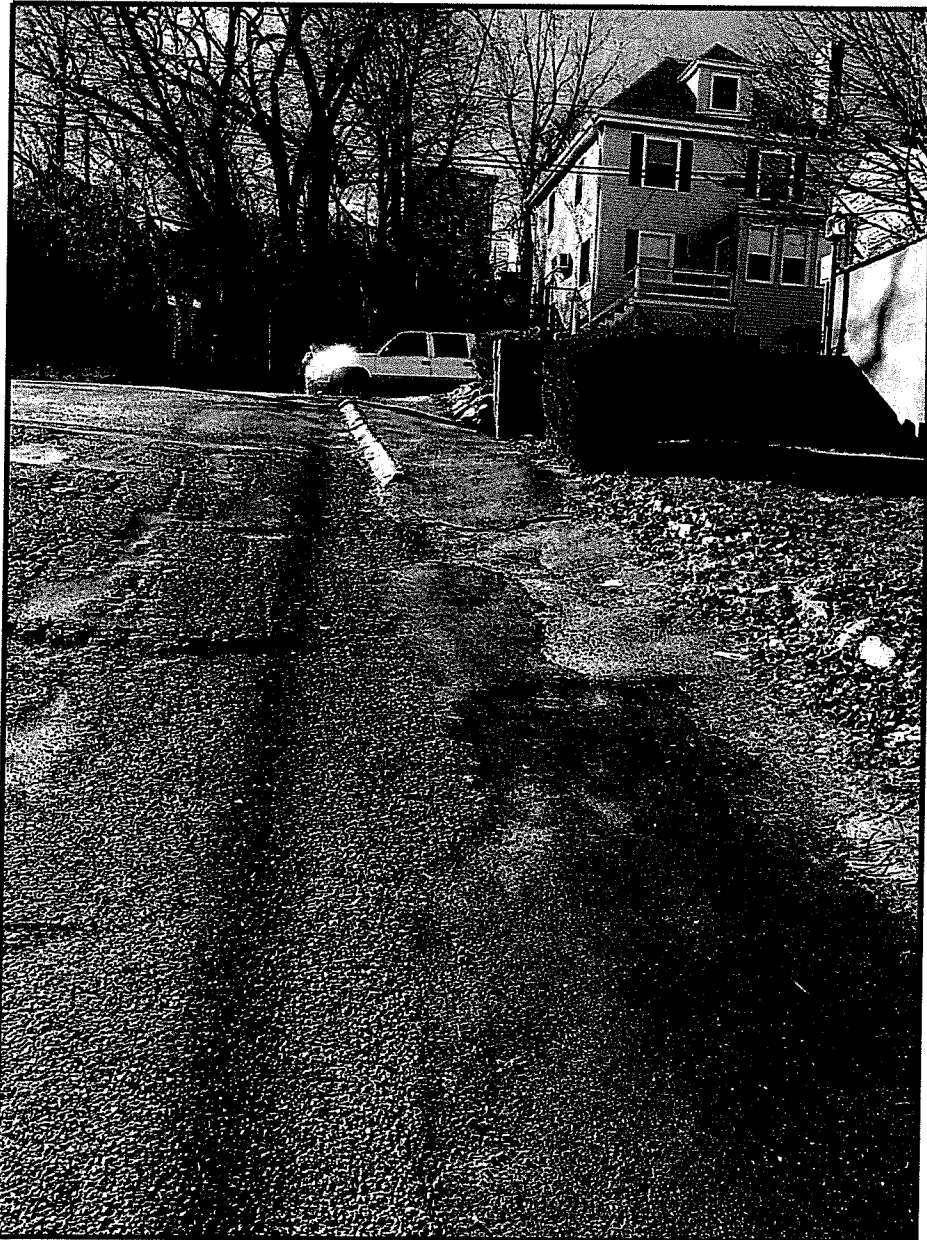


2/1/2016

## South Cambridge Street

Looking south towards Vane Street.  
Road and sidewalks both in poor condition.  
Note, asphalt berm at Vane Street.

Asphalt raveling, lose of aggregate seen, road is  
breaking up.



2/1/2016

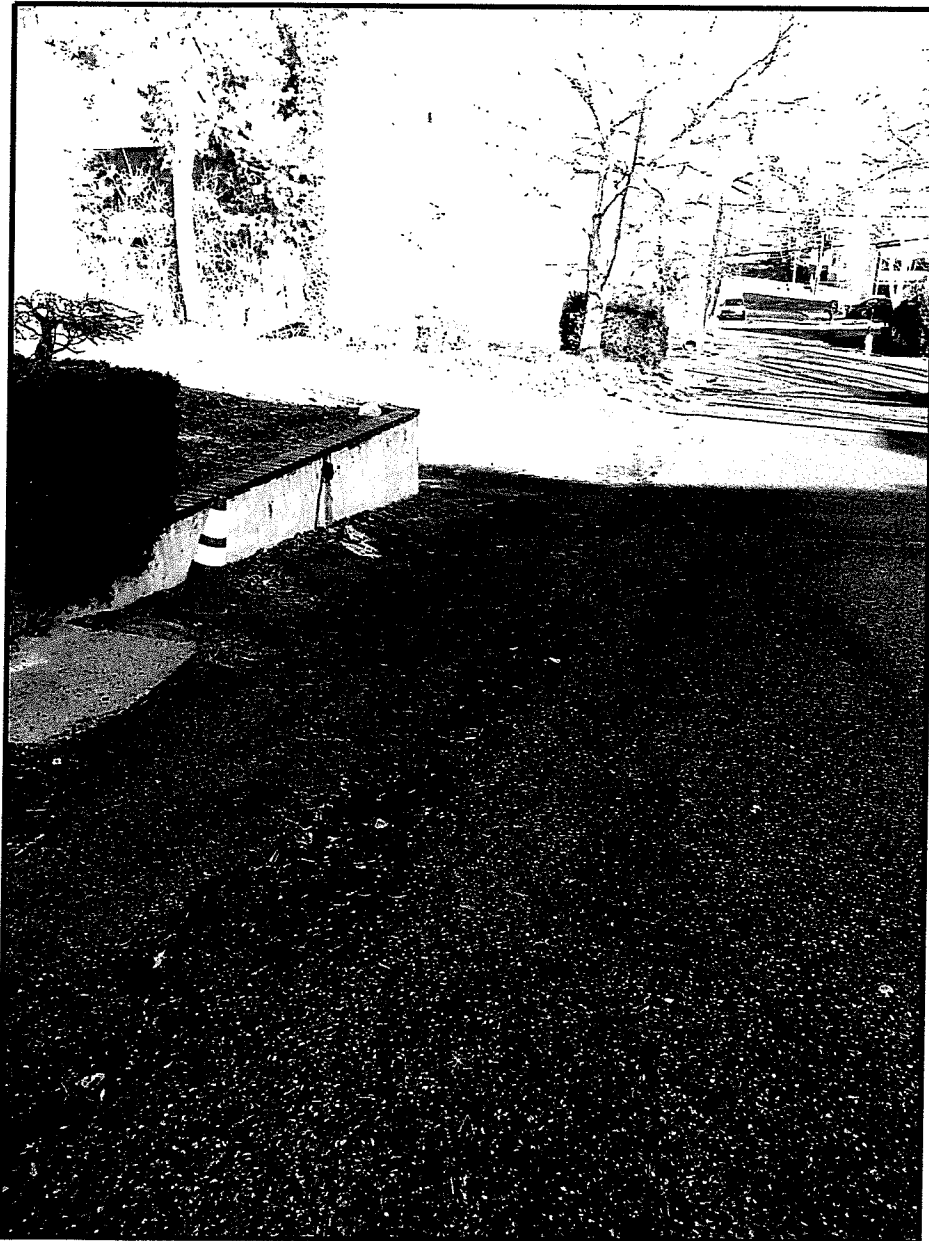
## South Cambridge Street

Looking north towards Warren St.

No formal sidewalk existing, road  
blends into property line.

Condition of the road is very poor, road raveling  
and breaking apart at the edges.

Walk doesn't continue beyond this driveway



2/1/2016

## South Cambridge Street

Looking north towards Warren St.

No formal sidewalk existing.

Slope of grass area shown too steep to install formal walk.

Walk installation would require retaining wall.

Multiple pothole repairs shown, road has failed in this location.



2/1/2016

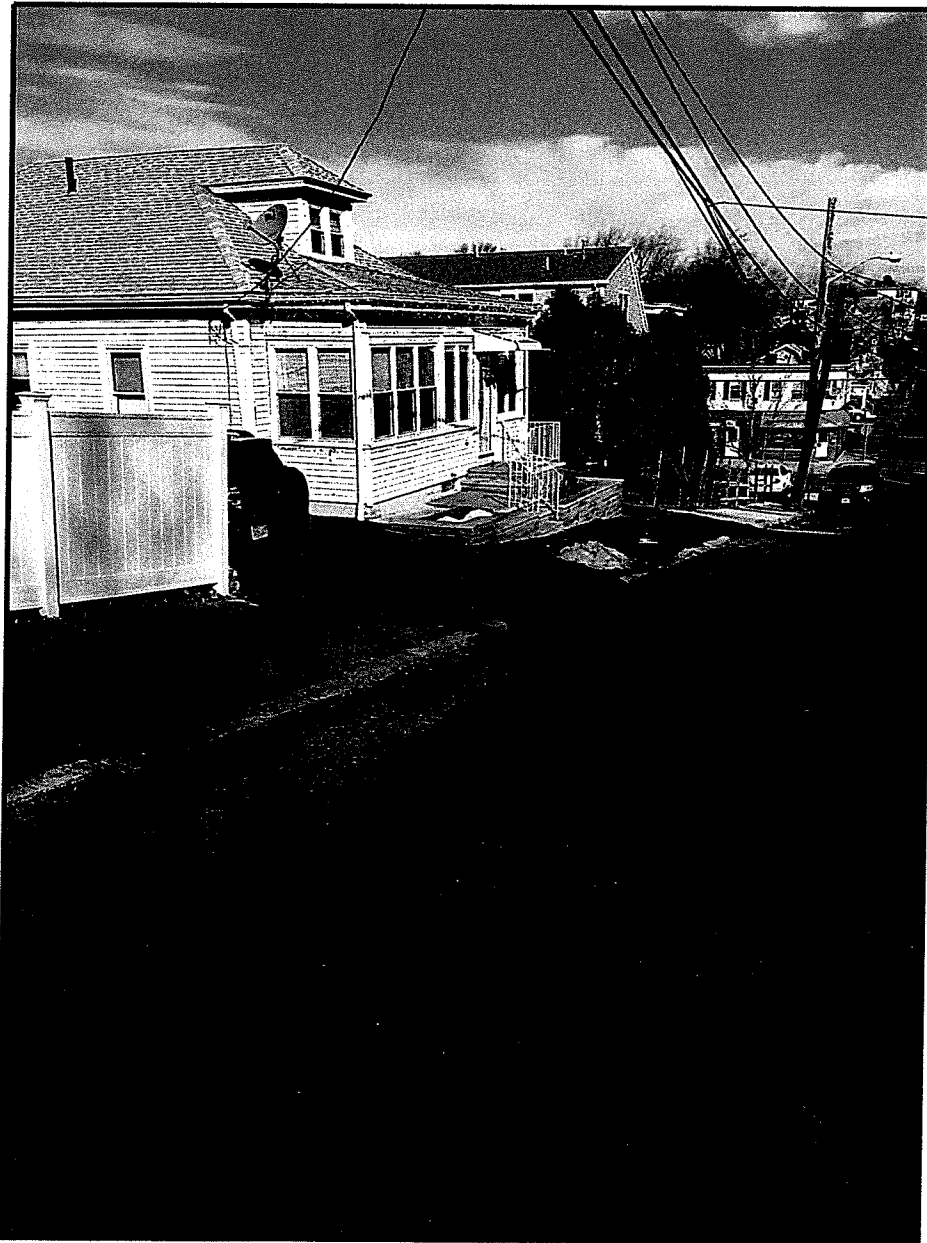
## South Cambridge Street

Standing south of Warren St. looking  
towards Park Ave.

Granite curb (west side only)  
settled and needs to be  
removed and reset.

Meeting ADA cross slope may expose  
bottom of retaining wall shown.

Road condition poor, cracking extensive.



2/1/2016

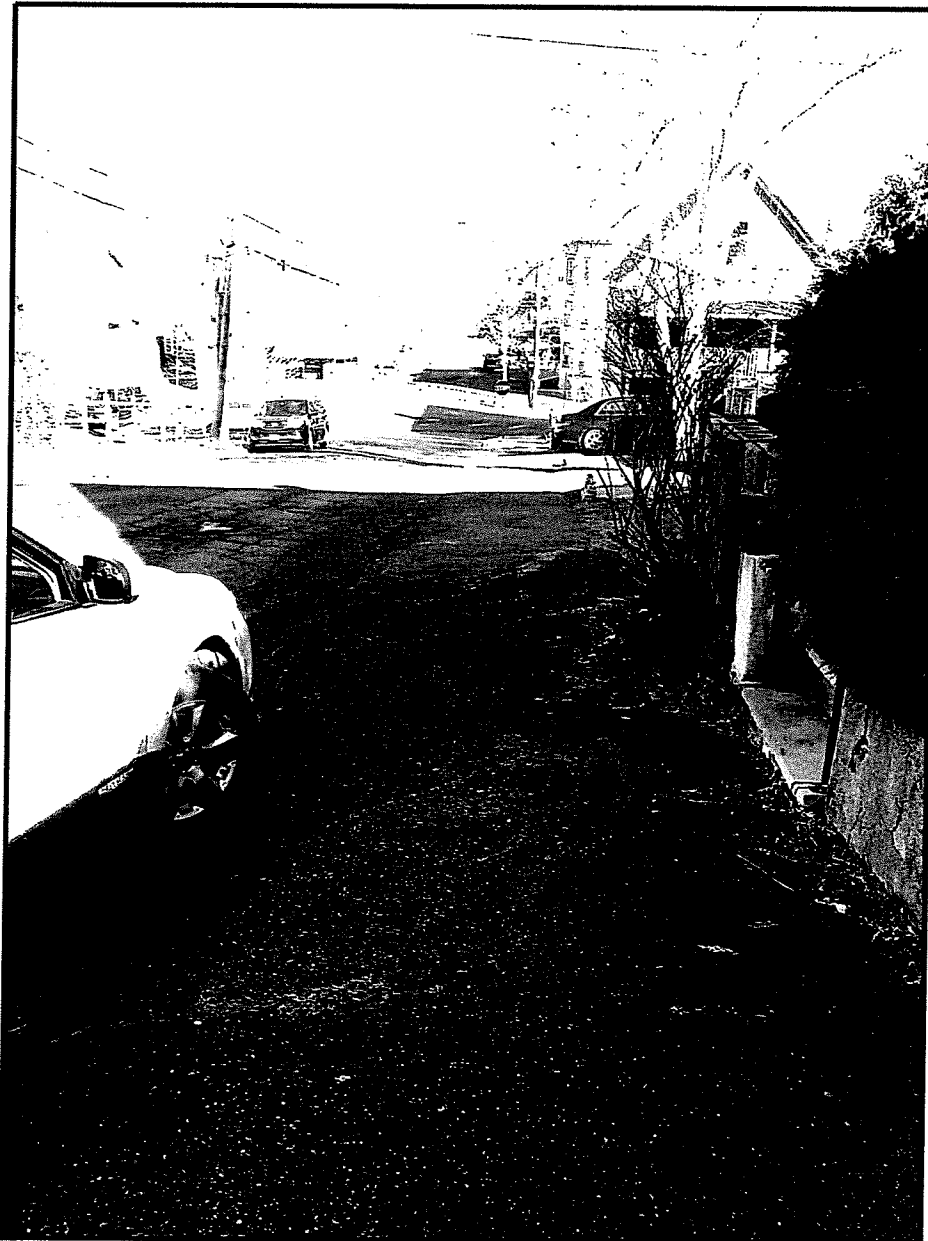
## South Cambridge Street

Standing south of Warren St. looking  
towards Park Ave.

No curbing exists on east side of the street.

Recommend installing granite curb  
to match west side. Curb and sidewalk  
install may create grading issues at private  
property.

Sidewalks in poor condition  
Roadway in very poor condition



2/1/2016

## South Cambridge Street

Standing south of Warren St. looking  
towards Park Ave.  
Roadway surface is badly broken up and  
in very poor / failed condition.  
Typical condition of majority of South  
Cambridge St. roadway..



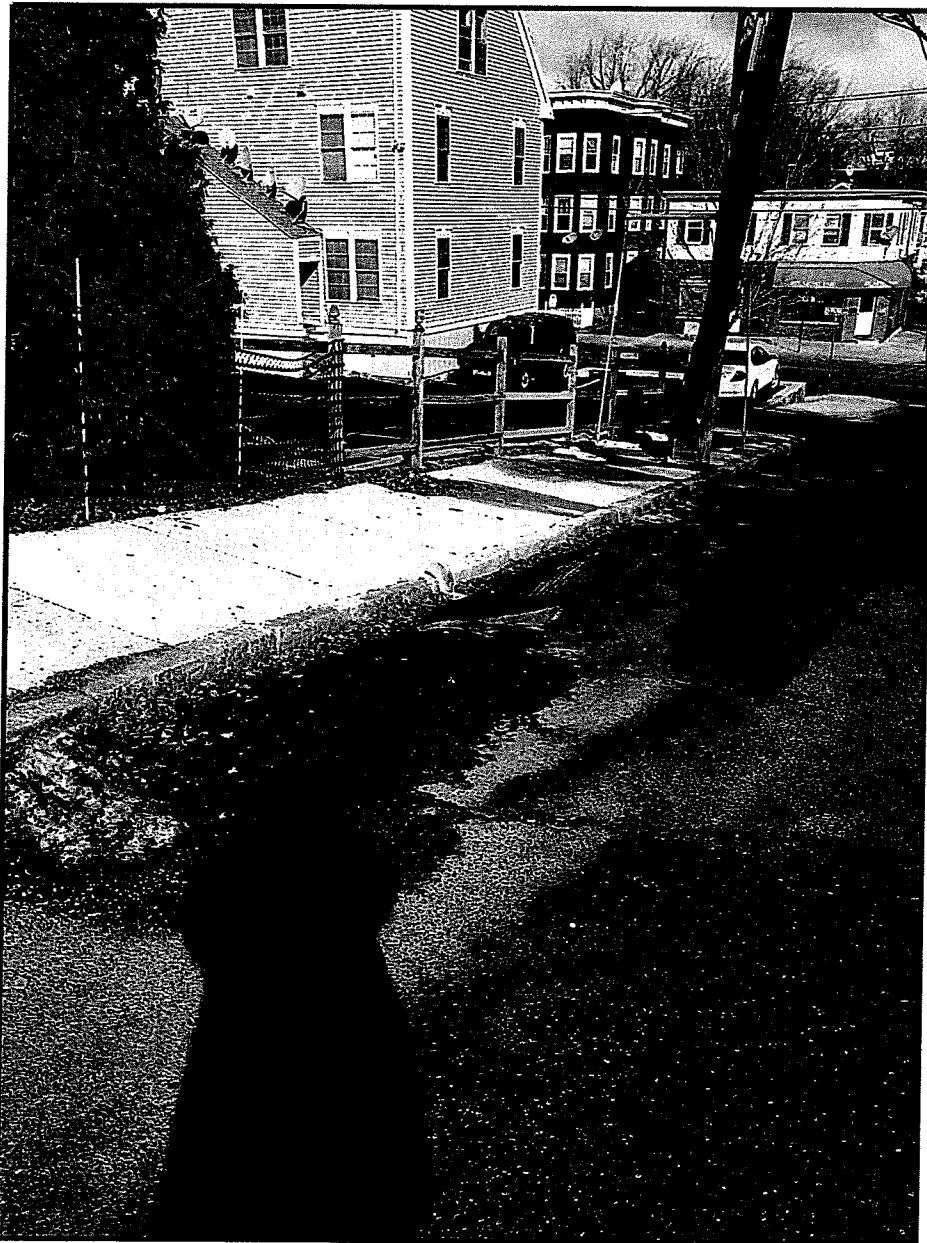
2/1/2016



## South Cambridge Street

Standing south of Warren St. looking  
towards Park Ave.

Photo shows sidewalk spot repair  
and roadway patch due to water main break.  
Patches completed summer 2015.

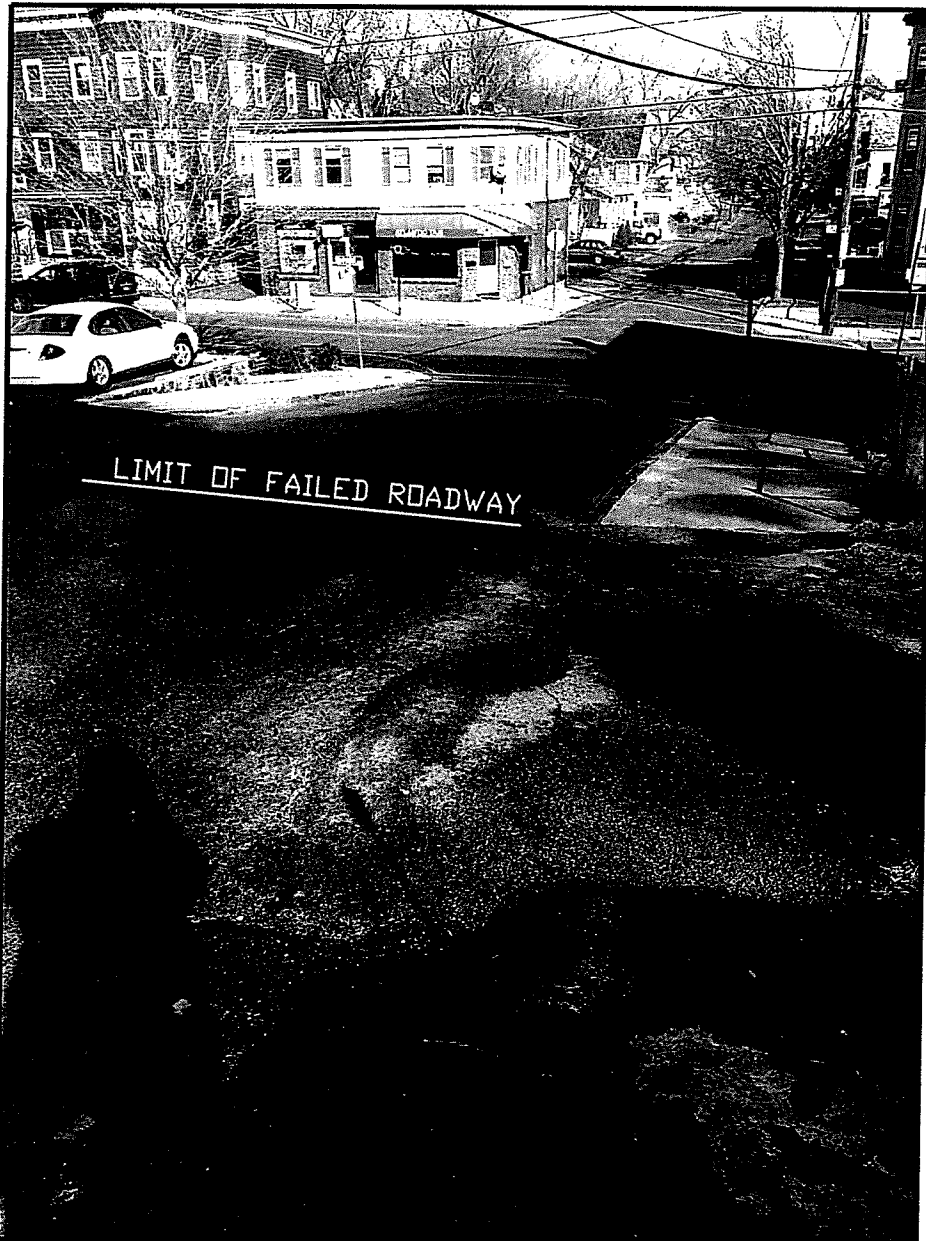


2/1/2016

## South Cambridge Street

Standing south of Warren St. looking  
towards Park Ave.

Photo shows granite curb and conc.  
sidewalks wrapping around Park Ave.



2/1/2016

## South Cambridge Street

Standing south of Warren St. looking  
towards Park Ave.  
Concrete sidewalk on east side shown.  
Concrete is heaved above curd  
and cracking.  
Curb reveal appx. 3" +/-



2/1/2016

# South Cambridge Street

Park Ave. shown.  
Existing concrete sidewalk and granite  
curb and is good condition to remain  
(at this specific location).



2/1/2016